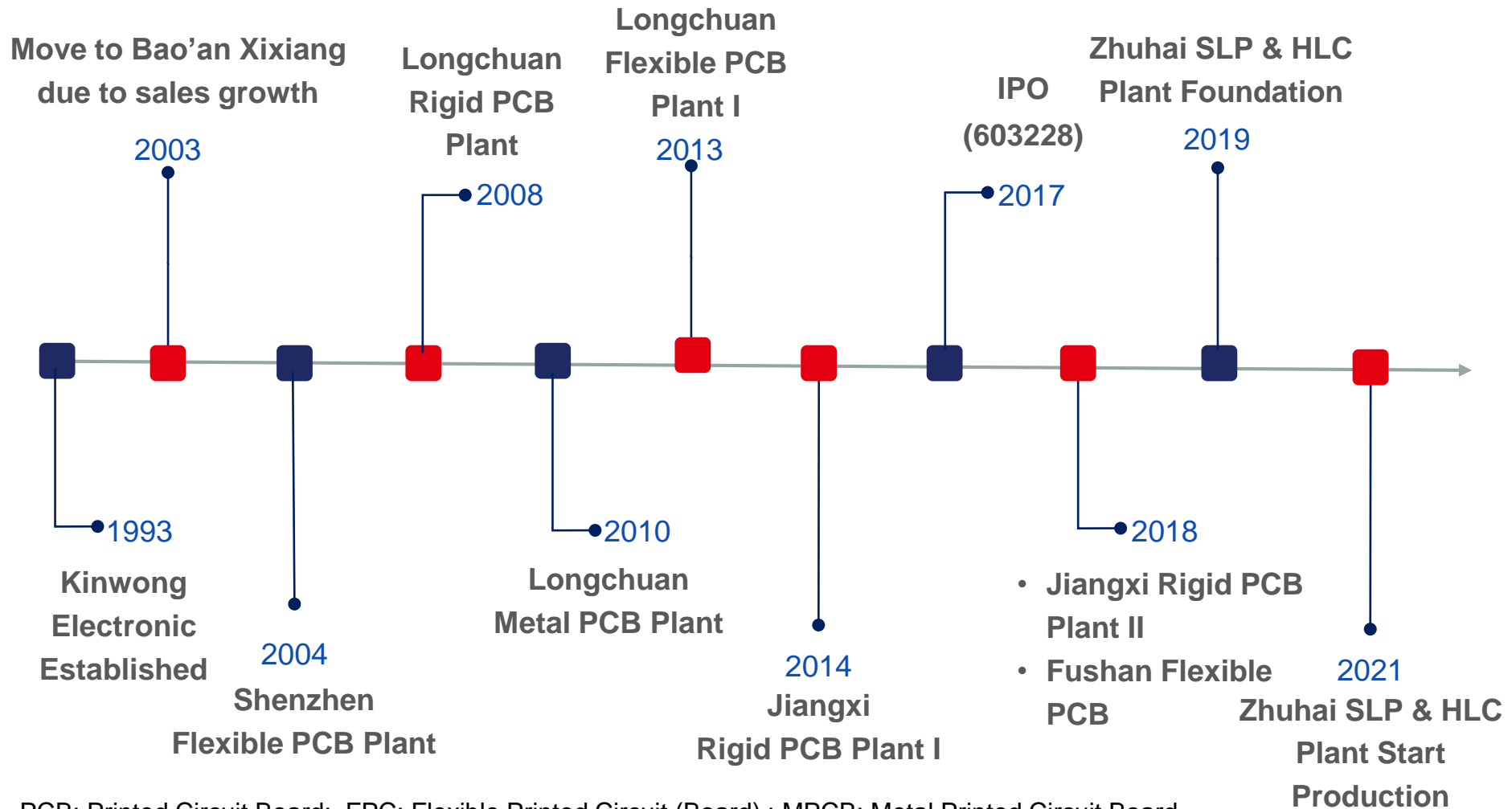




Kinwong

**To become the most reliable printed
circuit board manufacturer in the world.**

Stock Code: 603228



PCB: Printed Circuit Board; FPC: Flexible Printed Circuit (Board) ; MPCB: Metal Printed Circuit Board
HLC: High Layer Count; SLP: Substrate like PCB

28 years experience



Employees

13000+



Sales Revenue



Net Sales of 2020 USD1,092M

2021 Sales Target USD1,360M



5 Manufacturing Sites

SZ Shenzhen LC Longchuan

JX Jiangxi ZH Fushan

ZH Gaolangang



3 Product Lines

PCB Flexible PCB(FPC)

Metal Base PCB(MPCB)



Technical Center

- Established in 2006

- 330+ Patents

- Central lab - ISO17025/CNAS Certification

HQ SZ

Manufacturing Sites

SZ Shenzhen
LC Longchuan
JX Jiangxi
ZH Fushan & Gaolangang

Sales Office

HK Hongkong
KS Kunshan
FZ Fuzhou
TW Taiwan
EA Korea-Incheon

FAE&BD Office

EA Japan-Tokyo
EU Germany-Munich
UK-Clitheroe
NA US-Salt Lake City
US- San Jose
US-Virginia
MX-Guadalajara

Circuit Connects the World, Internet of Everything



Five Manufacturing Sites Locations

KINWONG

JX Site (On the North of SZ)

- 630km to SZ site, takes 8 hours by car.
- 76km to Jinggangshan Airport, takes 1 hour by car.

Ji'an



LC Site (On the North of SZ)

- 290km to SZ site, takes 4 hours by car.

Longchuan



ZH Site (On the West of SZ)

Fushan: 170km to SZ site and takes 2.6 hours.

Gaolangang: 192km to SZ site, takes 2 hours and 50 mins.

Jiangxi

Longchuan

Shenzhen

Zhuhai



Fushan



Gaolangang



Shenzhen

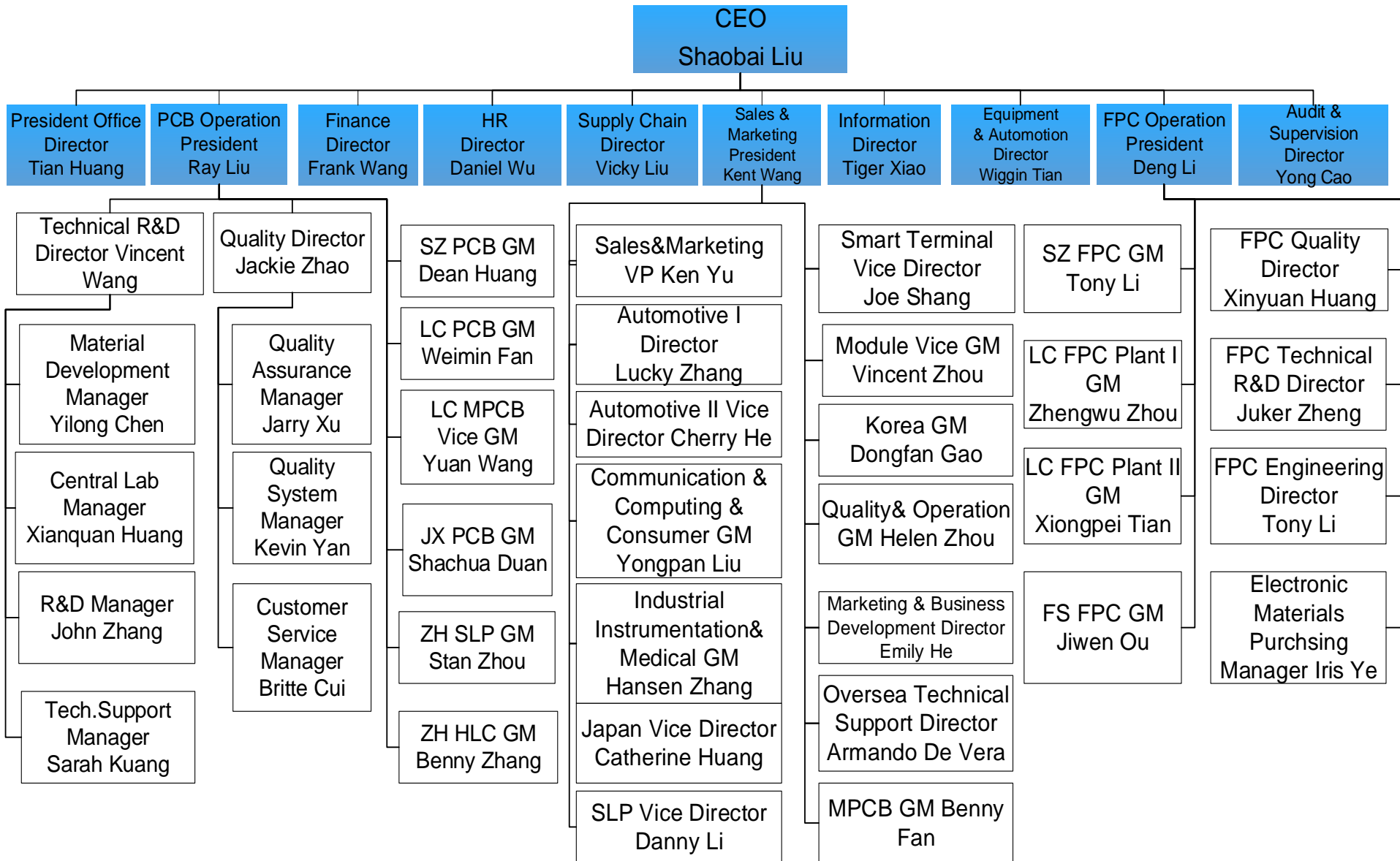
SZ Site

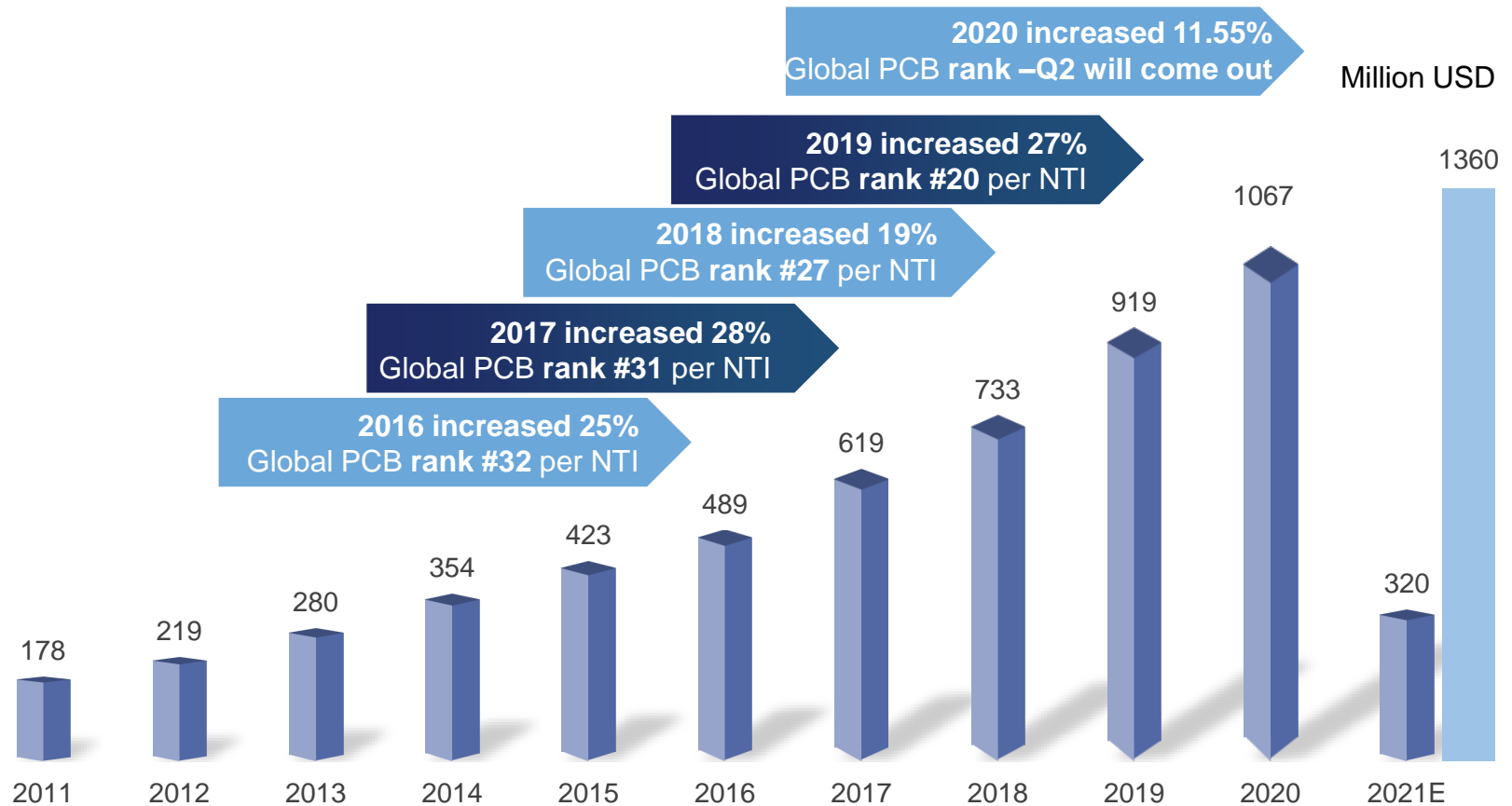
- 18km to SZ airport, takes 20 mins by car.
- 70km to HK airport, takes 2 hours by car.



Corporate Organization Chart

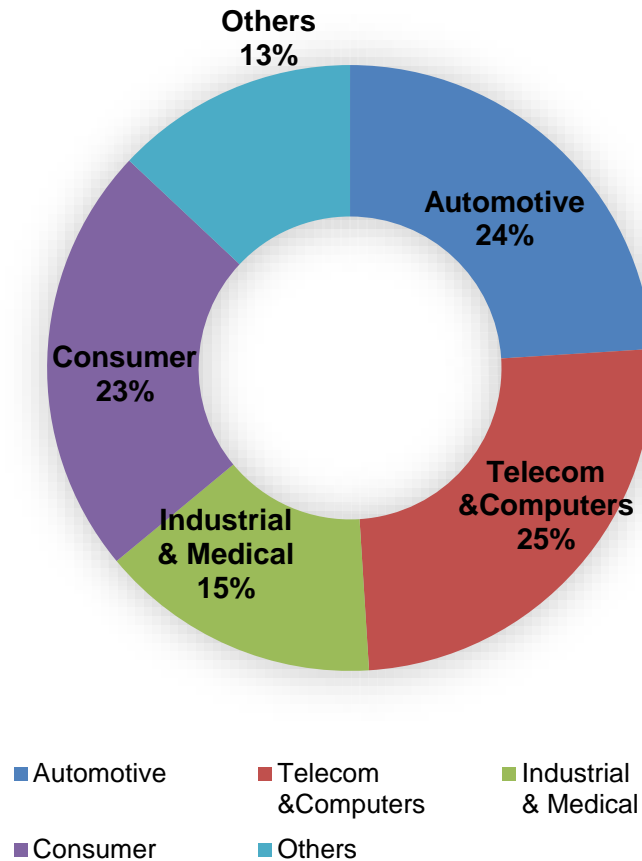
KINWONG



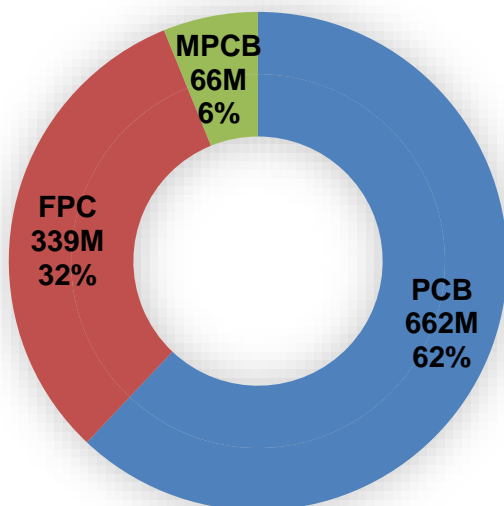


*** CAGR over 20% in the past 10 years, growth achieved by stable quality, competitive price and passion to service.**

Application in 2020

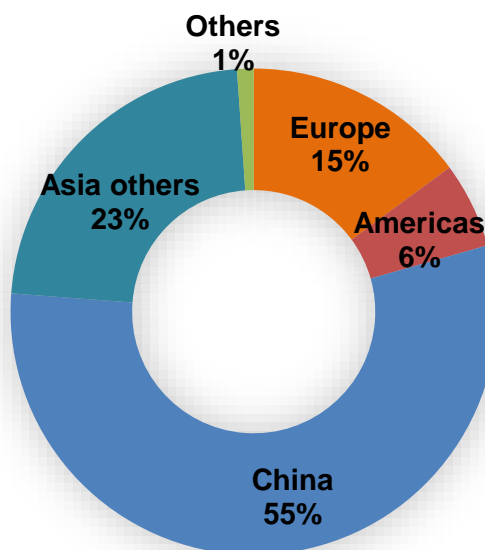


Sales Revenue USD1067M



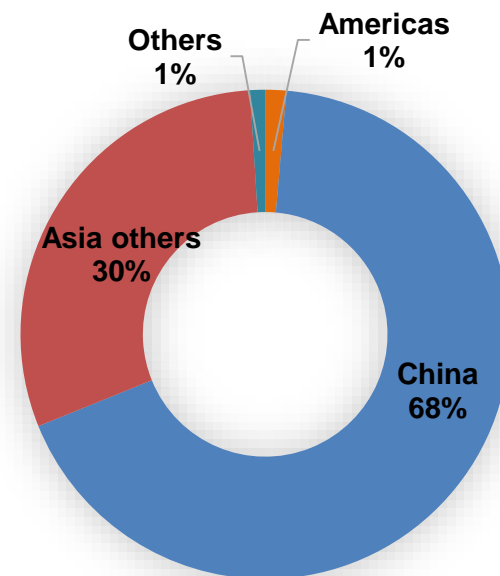
■ PCB ■ FPC ■ MPCB

PCB Ship-to Region



■ Europe ■ Americas ■ China
■ Asia others ■ Others

FPC Ship-to Region



■ Americas ■ China
■ Asia others ■ Others

Five Production Sites (SZ, LC, JX, ZHFS&GLG)



Plant Area



50,000 m²

F1

SZ Kinwong

- Headquarter
- PCB Division & FPC Division
- Monthly capacity: PCB**63,000**m², FPC**25,000**m²
- Employee: **2,400+**



230,000 m²

F2

LC Kinwong

- Subsidiary in Heyuan, South China's Guangdong Province.
- Three product lines: PCB, FPC, MPCB
- Monthly capacity: PCB**100,000**m², FPC **120,000**m², MPCB**40,000**m²
- Employee: **5,660+**



240,000 m²

F3

JX Kinwong-Intelligent factory

- Subsidiary in Ji'an, east China's Jiangxi Province
- JX PCB Division, world-leading intelligent PCB factory
- Monthly capacity: PCB 390,000m²
- Employee: **3,000+**



85,000 m²

F4-1

ZH Kinwong

Fu Shan

- Subsidiary in Zhuhai, Guangdong Province
- Fushan FPC Division
- Monthly capacity: **40,000**m² FPC
- Employee: **1,080+**



150,000 m²

F4-2

Gaolangang-High Tech. factory

- Subsidiary in Zhuhai, Guangdong Province
- High Layer Count & SLP factory
- Monthly capacity: **100,000**m² PCB (High Layer Count), **50,000**m² SLP
- Employee:1010

PCB: Printed Circuit Board; FPC: Flexible Printed Circuit (Board) ; MPCB: Metal Printed Circuit Board
HLC: High Layer Count; SLP: Substrate like PCB

Five Production Sites Product Types

KINWONG

Location	BU	Monthly Capacity	PCB	FPC	M-PCB	R-Flex	HDI	HLC	HF	Copper Inlay	FPCA	Factory Specialty
SZ	PCB	63,000m²	✓			✓	✓	✓	✓			Low Volume, various product technology, special base material, unique processing; Rigid-flex, High Frequency, high layer count heavy copper and HDI covers application field of automotive, telecommunication, industry control, power supply and medical products etc.
	FPC	FPC: 25,000m² FPCA: 10KK		✓		✓					✓	Use for Display Module, Touch Screen, Automobile, Industrial Control, UAV, Electronic Cigarette, Smart Home, Medical Industry.
LC	PCB	100,000m²	✓					✓	✓			Middle & Large Volume; Multi-layer board, applied in telecommunication, power supply, automotive and industrial.
	FPC	FPC: 120,000m² FPCA: 60KK		✓		✓					✓	Middle & Large Volume; Use for Automobile, Display Module, Touch Screen, Smartphone, LED backlight, Electronic Cigarette, TWS.
	MPCB	40,000m²			✓					✓		Middle& Large Volume, Dedicated to thermal management solutions applied in new energy automotive, automotive lighting, power module and other lighting.
JX	PCB	390,000m²	✓						✓			Large volume normal FR-4 boards; Widely applied in automotive, consumer and telecommunication and etc.,.
ZH 2	Fu Shan FPC	FPC: 50,000m² FPCA: 40KK		✓		✓					✓	Large volume; Use for Medical Industry, Wireless Charging, Touch Screen, Automobile, TWS, Smart Home, Display Module, 5G etc.
	Gao Langang HLC	100,000m²					✓	✓	✓			Large Volume; Dedicated on high layer count, widely applied in telecommunication, network, server, storage and automobiles.
	Gao Langang SLP	50,000m²					✓					Large Volume; Dedicated to SLP, applied in telecommunication, consumer products.

Why Kinwong?



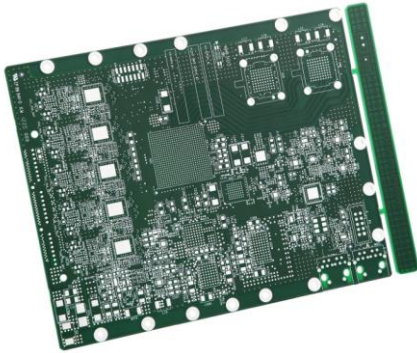
**Kinwong
Core Values**

**Strong financial
management**

**Real time technical
and quality support**

**Received many
outstanding awards
from major customers**

**9 Facilities in 5
Manufacturing sites**



18L +Industrial Control



HLC+High Speed+HDI+Telecom



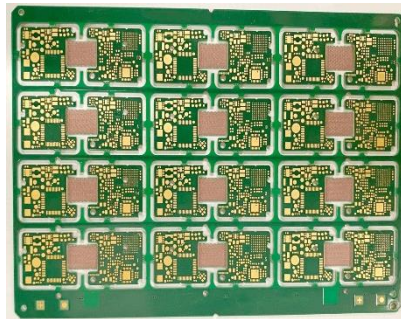
HLC+Heavy Copper+Industrial



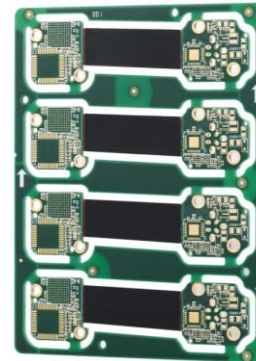
Multilayer+ Comp



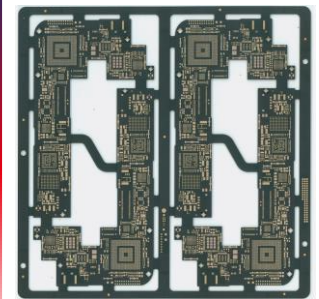
High Frequency+ADAS



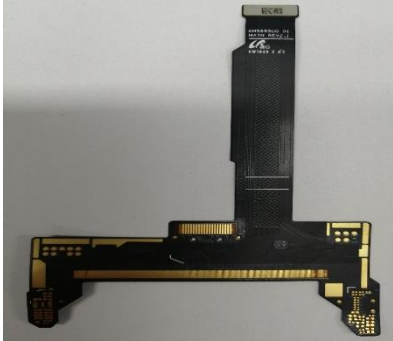
8L Semi-flex+Industrial



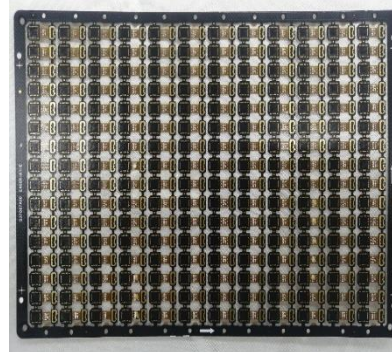
Rigid-flex+Medical



nylayer+Consumer



OLED FPC



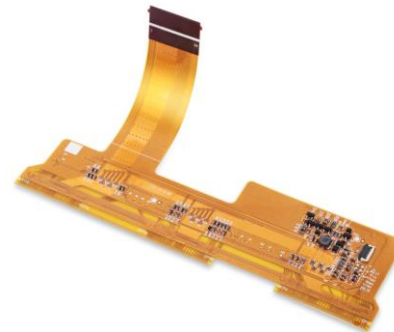
Camera Compact Module FPC



5G Transmission Line FPC



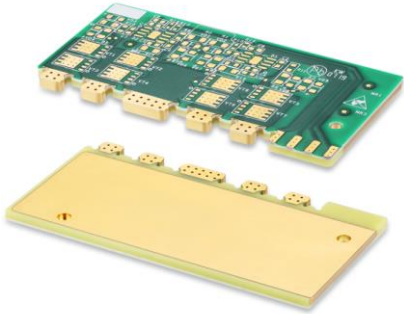
EV Battery



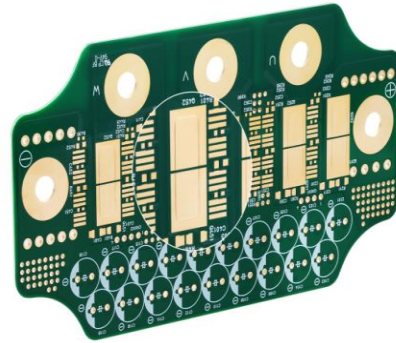
Automotive TFT



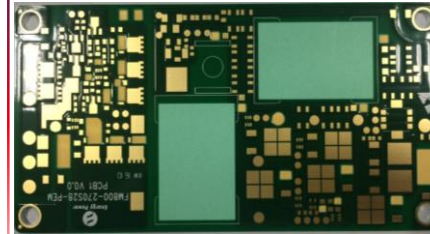
Tablet TFT



**Cu Inlay+Side Metallization
Large Power -Telecom**



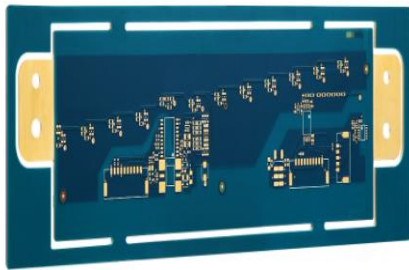
**Cu Inlay
+Automotive
Lighting**



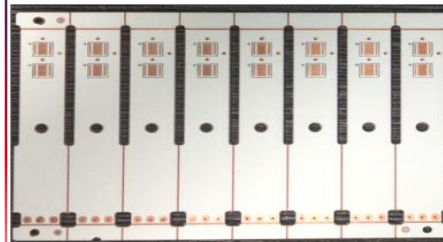
**2L Al-Base +Laser
Blind Via +Power**



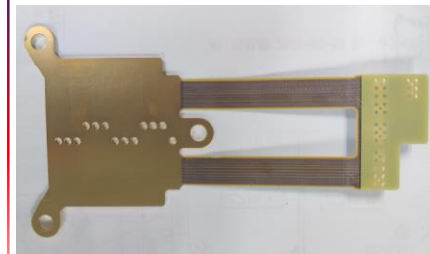
**Double Side Al-Core
Lighting Bar**



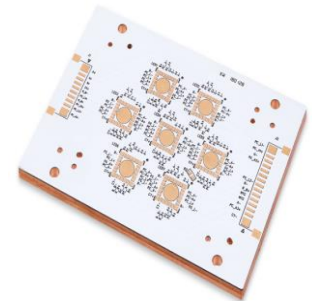
**Double Side Cu Core
with Thermal
Conductive Resin**



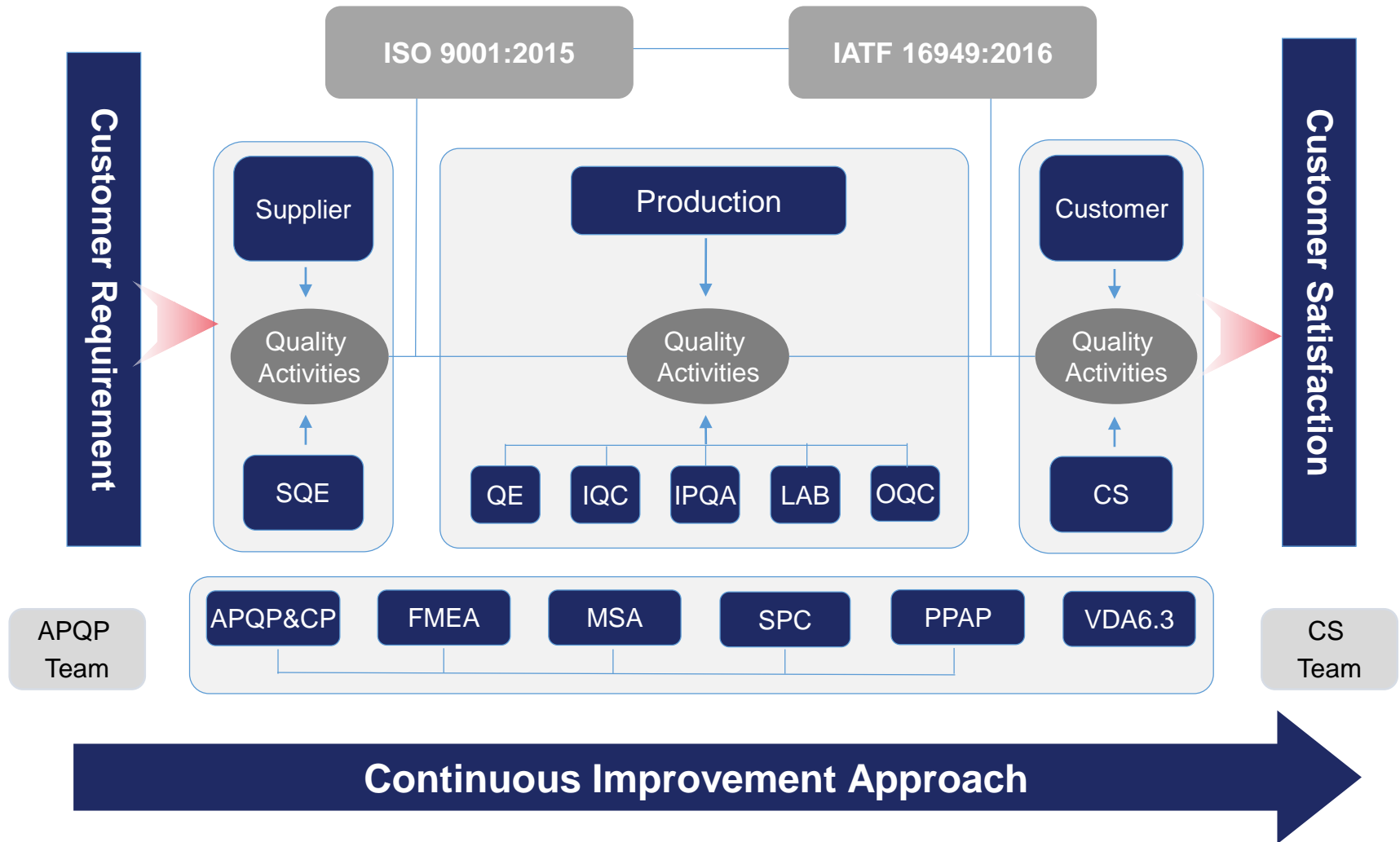
**Double Side Cu
Pedestal
+Automotive Lamp**



**Flex + Al-Base -
Lighting**



**Single Side
Cu Pedestal -
Lighting**



Kinwong System Management

QMS

General
ISO9001



ISO 9001
Quality
Management
Systems
CERTIFIED

Automotive
IATF16949



IATF 16949
Automotive Quality
Management
CERTIFIED

Medical
ISO13485



CSR

Environment
ISO14001



OHS system
ISO45001



Energy system
ISO50001



HSPM
IECQ QC080000



ISMS

ISMS
ISO27001



ISO/IEC
27001
Information Security
Management
CERTIFIED

Other systems

CNAS
IEC/ISO17025



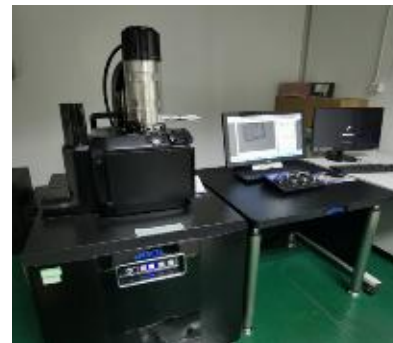
Plant	ISO9001: 2015 Quality	IATF16949: 2016 /TS16949 Automotive	ISO13485: 2016 Medical	ISO27001: 2013 ISMS	IECQ QC080000: 2017 HSPM	ISO14001: 2015 EMS	ISO45001: 2018	GB/T23331- 2012 Energy	GB/T23001- 2017 I&I	ISO/IEC17025: 2017 CNAS
Shenzhen	✓	✓	✓	✓	✓	✓	✓	✓	✓	✓
Original Registration Date	2006-5-18	2006-4-20	2015-11-2	2019-12-25	2016-1-5	2008-12-24	2009-10-16	2018-12-20	2019-1-8	2017-1-3
Longchuan	✓	✓	✓	✓	✓	✓	✓			
Original Registration Date	2008-7-6	2008-7-6	2019-5-22	2019-12-25	2014-3-11	2008-7-14	2013-4-22			
Jiangxi	✓	✓	✓	✓	✓	✓	✓			
Original Registration Date	2014-9-8	2015-6-8	2018-11-1	2019-12-25	2015-7-14	2014-8-29	2016-1-4			
Zhuhai FS	✓	✓			✓	✓				
Original Registration Date	2017-9-14	2017-9-14			2016-5-27	2019-6-29				



CAF Test System



On-line Thermal Shock



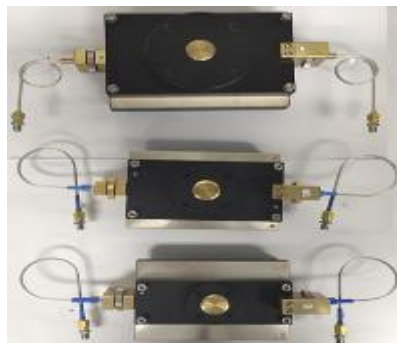
SEM+EDS



**Laser Scanning
Confocal Microscope**



Vector Netlist Analysis + Dk & Df Test System



DMA



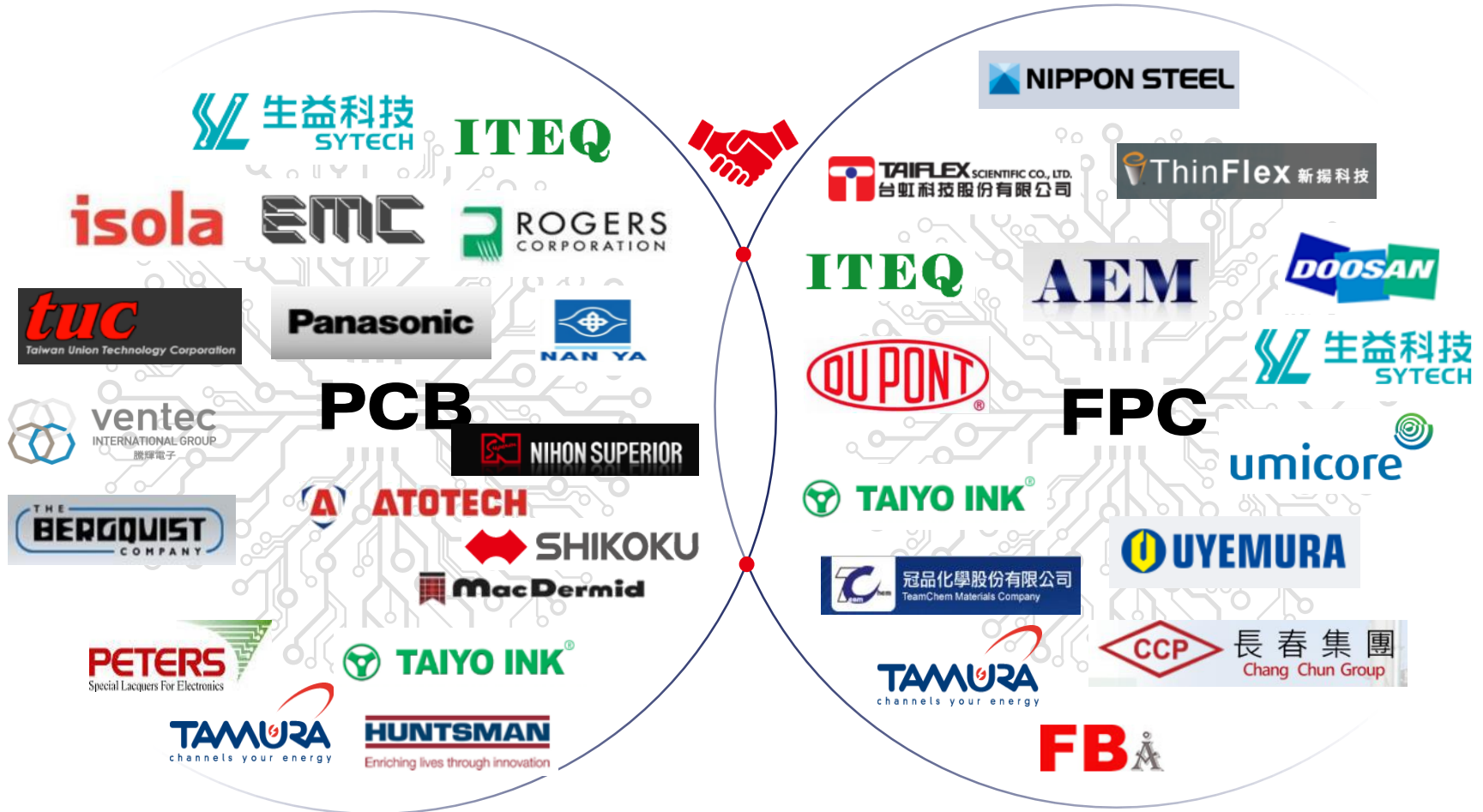
TMA



- 2020 ● ZTE Best Comprehensive Performance Award
- 2020 ● Huawei HiSilicon FPC Best Supplier Quality Assurance Award
- 2020 ● OPPO Quality First Award
- 2020 ● TRULYOPTO Excellent Supplier
- 2020 ● VIVO Excellent Quality Award
- 2018-2020 ● Sungrow Excellent Quality
- 2018-2020 ● HiRain Best Supplier
- 2018-2020 ● CSOT Excellent Quality Award
- 2020 ● Visionox Best Quality Award
- 2020 ● Askey Excellent Supplier
- 2020 ● Wingtech Excellent Quality Award
- 2019 ● Plexus Excellent Partner
- 2019 ● Liteon Outstanding Supplier
- 2020-2019 ● Logitech Sustainability "Torch" Award
- 2019~2015 ● Hella Best Supplier

.....

.....





- Environmental rule & law compliance,
Reduce cost & waste
- Keep cleanness & safety production
- Continuous improvement on
environmental protection



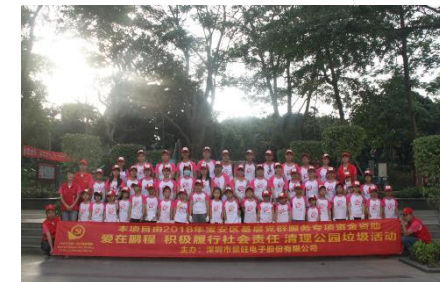
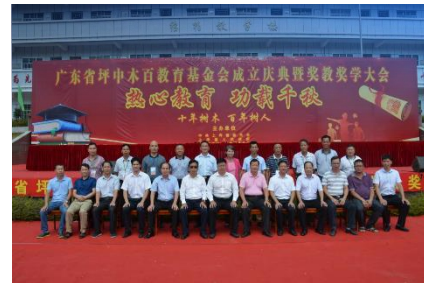
- Contribute to the environmental protection and the sustainable development of human society.



Kinwong Business Philosophy

- People foremost
- Manufacturing competitive products
- Expanding the enterprise
- Repaying the society.

Kinwong participates in social charities on a routine basis, which ranges from financial donations for education, civil donations that help them build bridges and repair roads, and helping the elderly and children via young people volunteering their time and care.





THANKS

**To become the most reliable printed circuit
board manufacturer in the world.**