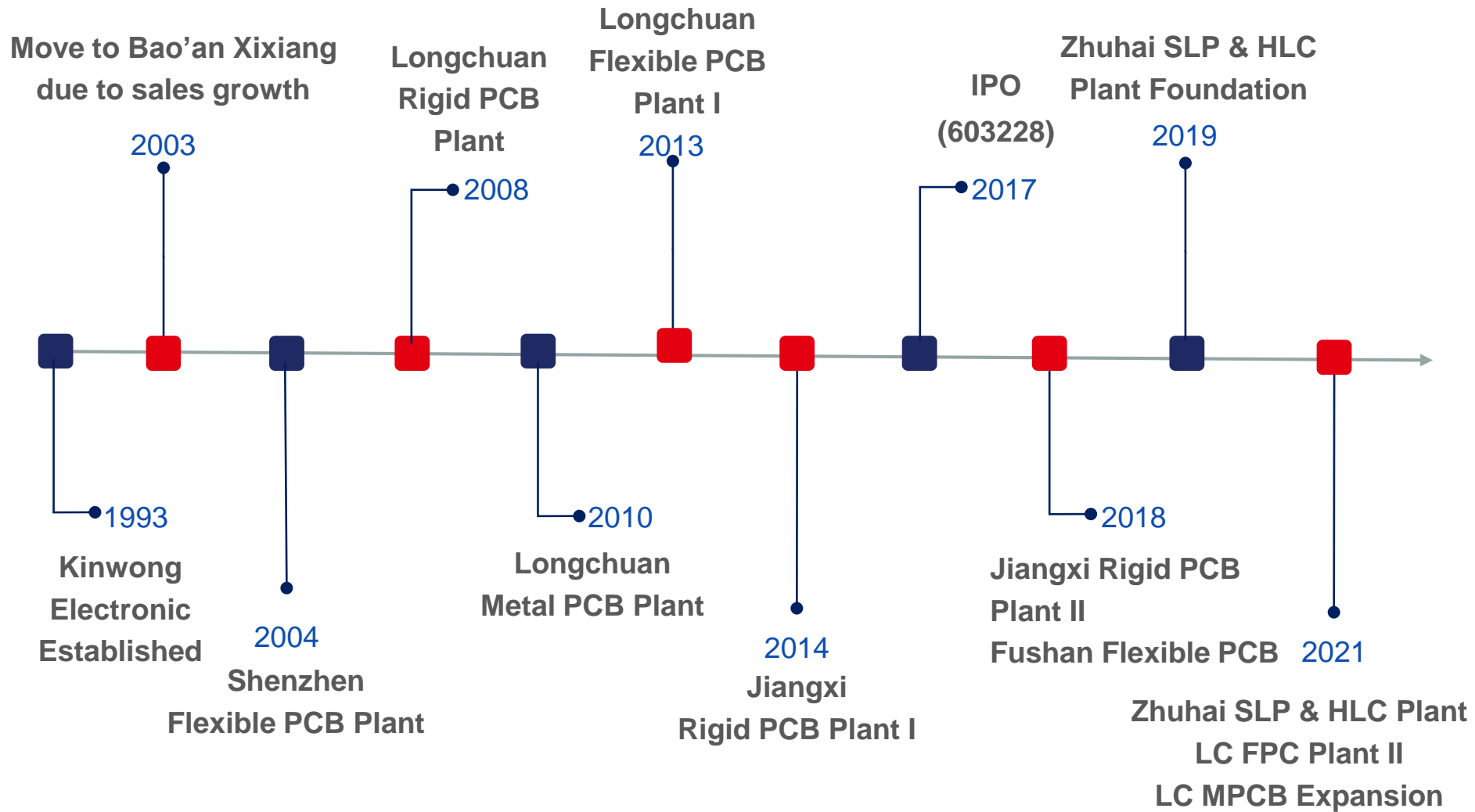




Kinwong

**To become the most reliable printed
circuit board manufacturer in the world.**

Stock Code: 603228



PCB: Printed Circuit Board; FPC: Flexible Printed Circuit (Board) ; MPCB: Metal Printed Circuit Board
HLC: High Layer Count; SLP: Substrate like PCB

28 years experience



Employees

14000+



Sales Revenue



Net Sales of 2020 USD1,092M

2021 Sales Target USD1,402M



5 Manufacturing Sites

SZ Shenzhen LC Longchuan

JX Jiangxi ZH Fushan

ZH Gaolangang



3 Product Lines

PCB Flexible PCB(FPC)

Metal Base PCB(MPCB)



Technical Center

- Established in 2006

- 330+ Patents

- Central lab - ISO17025/CNAS Certification

HQ SZ

Manufacturing Sites

SZ Shenzhen
LC Longchuan
JX Jiangxi
ZH Fushan & Gaolangang

Sales Office

HK Hongkong
KS Kunshan
FZ Fuzhou
TW Taiwan
EA Korea-Incheon

FAE&BD Office

EA Japan-Tokyo
EU Germany-Munich
UK-Clitheroe
NA US -Los Angeles
US -Virginia
MX-Guadalajara

Circuit Connects the World, Internet of Everything



Five Manufacturing Sites Locations

KINWONG

JX Site (On the North of SZ)

- 630km to SZ site, takes 8 hours by car.
- 76km to Jinggangshan Airport, takes 1 hour by car.

Ji'an



LC Site (On the North of SZ)

- 290km to SZ site, takes 4 hours by car.

Longchuan



ZH Site (On the West of SZ)

- Fushan:** 170km to SZ site and takes 2.6 hours.
- Gaolangang:** 192km to SZ site, takes 2 hours and 50 mins.

Jiangxi

Longchuan

Shenzhen

Zhuhai

SZ Site

- 18km to SZ airport, takes 20 mins by car.
- 70km to HK airport, takes 2 hours by car.

Shenzhen



Fushan



Gaolangang





Corporate Organization Chart

KINWONG

CEO
Shaobai Liu

COO

Operation
Management
VP

Equipment
& Automation
Director

IT Director

PCB
Operation
President

President
Office
Director

HR
Director

Sales &
Marketing
President

Supply
Chain
Director

Finance
Director

FPC
Operation
President

Audit &
Supervision
Director

Key Account
Master Planning

Business
Management

PCB Planning

FPC Planning

Logistics

SZ PCB

LC PCB

LC MPCB

JX PCB

ZH SLP

ZH HLC

Technical R&D
Director

Quality Director

Sales&Marketing VP
Ken Yu

Automotive I Director
Lucky Zhang

Automotive II Vice
Director Cherry He

Industrial
Instrumentation &
Medical GM Hansen
Zhang

Japan Vice Director
Catherine Huang

Communication &
Computing &
Consumer GM
Yongpan Liu

HLC Vice Director
Michael Xi

Smart Terminal Vice
Director
Joe Shang

Module Vice GM
Vincent Zhou

Korea GM
Dongfan Gao

Marketing &
Business
Development
Director Emily He

Oversea Technical
Support Director
Armando De Vera

MPCB GM
Benny Fan

SLP Vice Director
Danny Li

SZ FPC

LC FPC I

LC FPC II

FS FPC

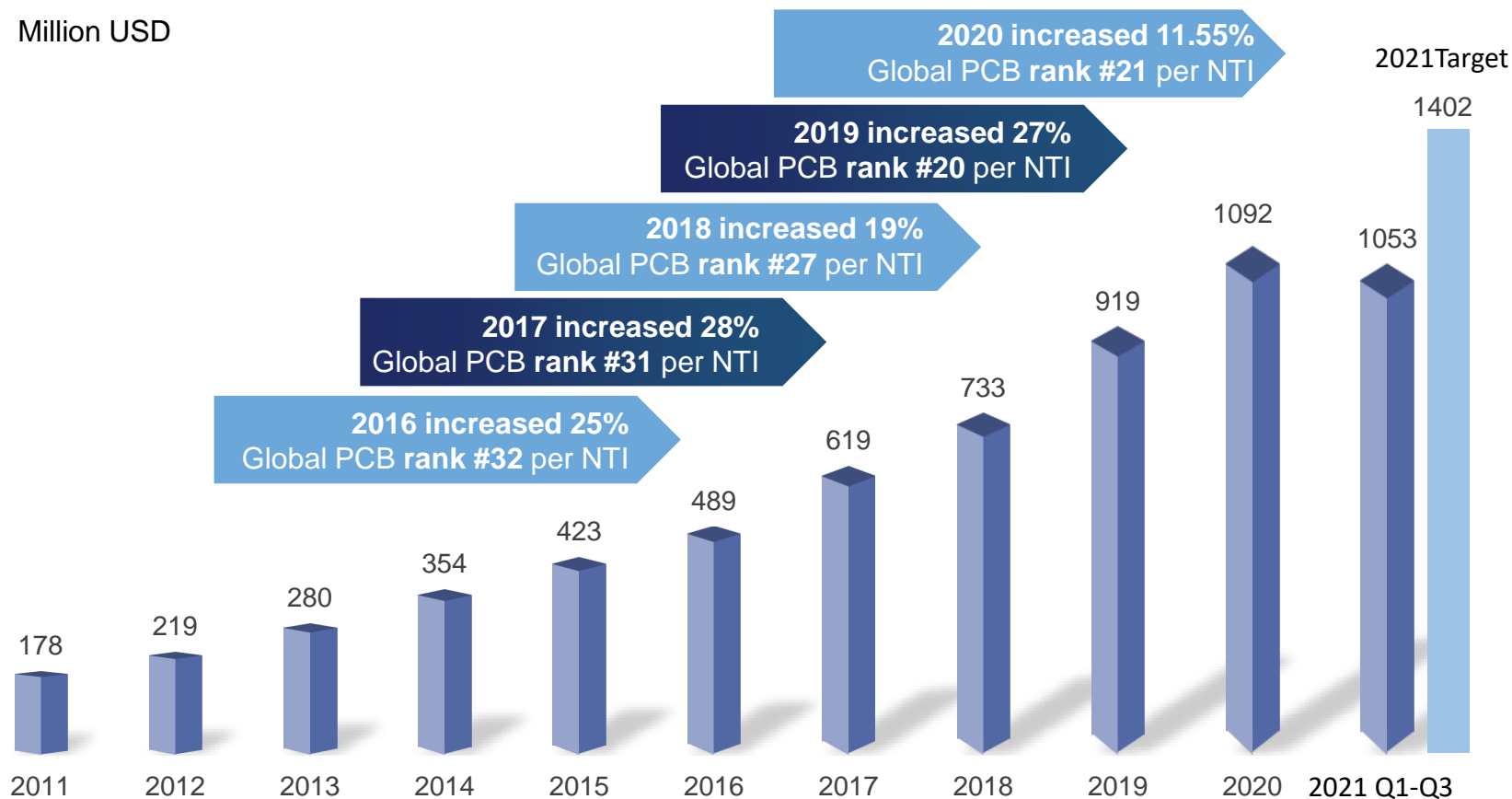
FPC Quality
Dept.

FPC Technical
R&D Dept.

FPC
Engineering
Dept.

Electronic
Materials
Purchasing
Dept.

Million USD



*** CAGR over 20% in the past 10 years, growth achieved by stable quality, competitive price and passion to service.**

2021: Exchange 6.4192

Kinwong Group No.21

World Top 128 PCB Makers in 2020 (US\$ Million)

Kinwong FPC No.14

Estimated Top FPC Makers in 2020 (\$ Million)

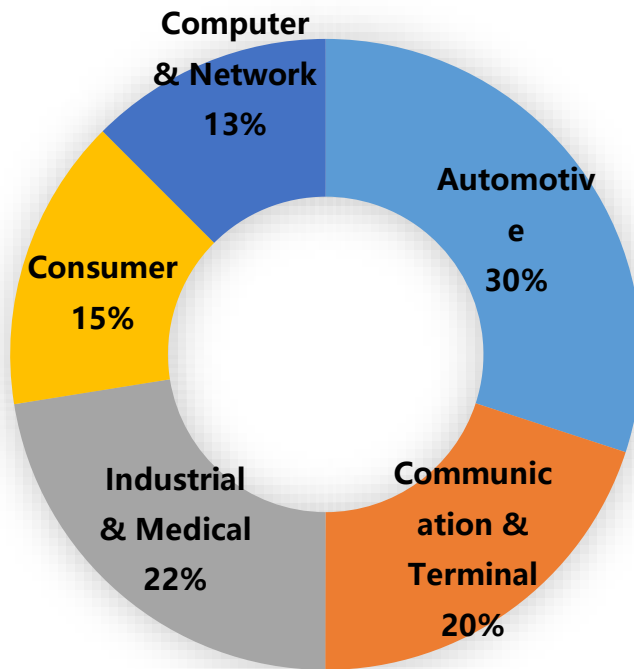
Rank	Maker	Local Name	Country	2019	2020
1	ZD Tech*	臻鼎科技	Taiwan	4,080	4,454
2	Unimicron	欣興電子	Taiwan	2,801	2,982
3	DSBJ (Mflex*+Multek)	東山精密	China	2,150	2,719
4	Nippon Mektron*	メクトロン	Japan	2,652	2,639
5	TTM Technologies	TTM Tech	USA	2,238	2,105
6	Compeq	華通電腦	Taiwan	1,906	2,054
7	Tripod	健鼎科技	Taiwan	1,851	1,885
8	Shennan Circuit	深南電路	China	1,525	1,680
9	Ibiden	イビデン	Japan	1,238	1,556
10	HannStar Board	瀚宇博德	Taiwan	1,464	1,551
11	Samsung E-M	삼성전기	S.Korea	1,043	1,493
12	KBC PCB Group	建滔集團	China	1,253	1,370
13	AT&S	AT&S	Austria	1,153	1,360
14	Nanya PCB	南亞電路	Taiwan	1,055	1,307
15	Wus Group	滬士電路	Taiwan	1,205	1,243
16	Young Poong Group*	영풍그룹	S.Korea	1,134	1,206
17	Meiko	メイコー	Japan	1,082	1,117
18	Fujikura*	フジクラ	Japan	977	1,073
19	Shinko Denki	新光電氣	Japan	764	1,061
20	LG Innotek	LG이노텍	S.Korea	624	1,054
21	Kinwong	景旺電子	China	917	1,023

Maker	2020 Revenue	2020 FPC Revenue	Note
ZDT	4,454	3,560	Apple
Nippon Mektron	2,636	2,636	Apple
DSBJ	2,719	2,240	Apple
Fujikura	1,073	1,073	Apple
Flexium Technology	1,014	1,014	Apple
Young Poon Group	1,206	830	Apple & Samsung
BHFlex	611	611	Apple
Career Technology	544	544	Apple small
Compeq	2,054	510	RFC, Apple
Murata	450	450	Apple
Nitto Denko	429	429	Expanding
SI Flex	391	391	Samsung
Xiamen Hongxin	382	382	
SEMCO	1,493	340	\$250 to Apple
Kinwong Electronics	1,023	340	
STEMCO	289	289	COF
Unitech	488	240	Apple
AKM/AKM Meadville	756	200	
Ichia	187	187	
Leader Tech	174	174	
MFS	241	170	
Unimicron	2,982	150	
Top Total	25,596	16,760	

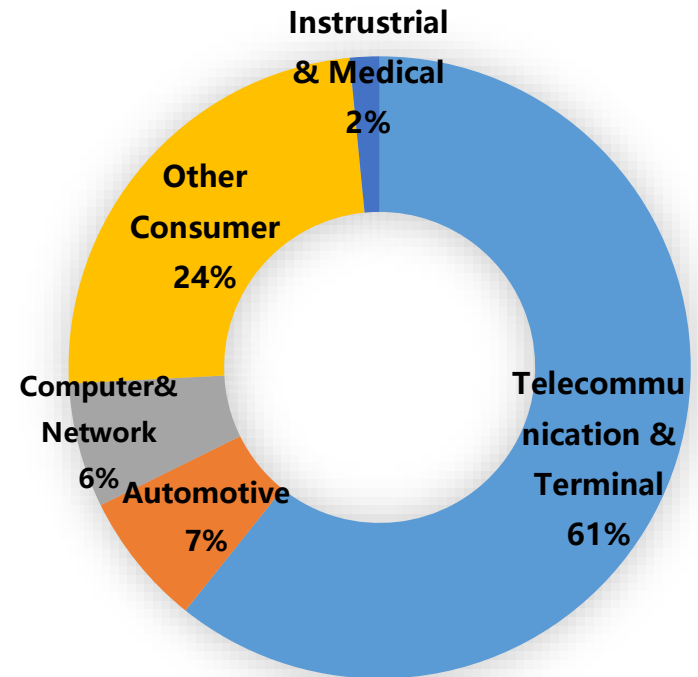
(N.T. Information Ltd)

Note: Apple requires PCBA by FPC makers

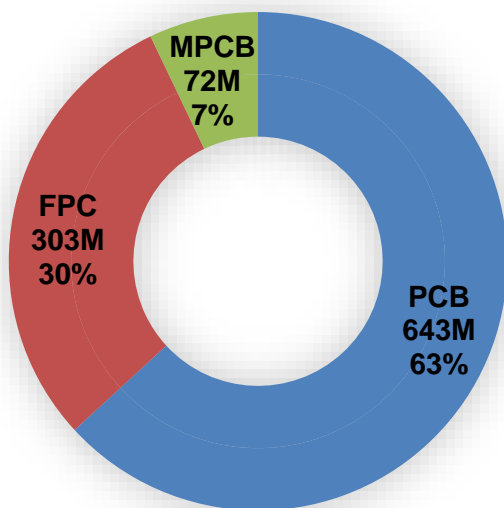
PCB By Application



FPC By Application



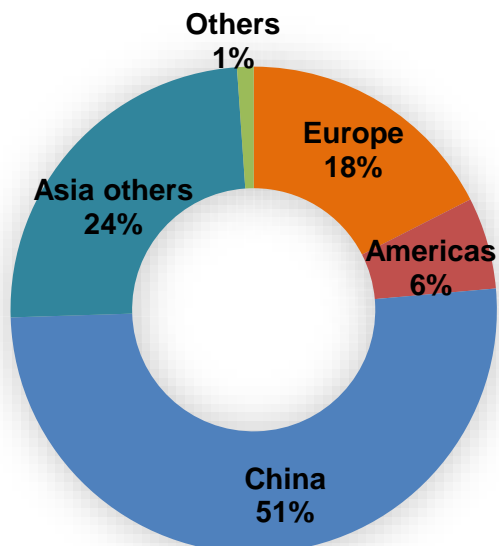
Sales Revenue
USD1018M



■ PCB ■ FPC ■ MPCB

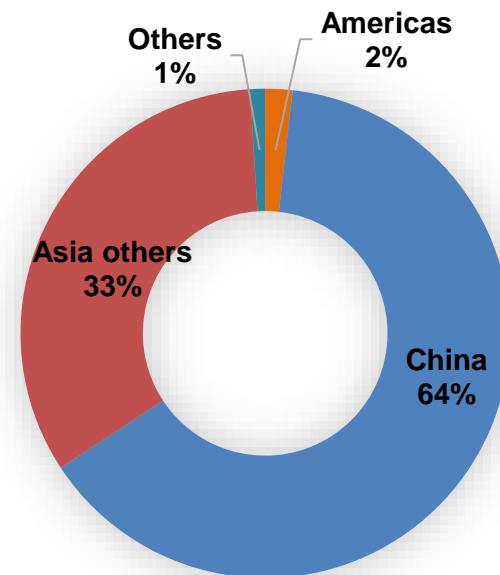
2021:Exchange 6.4192

PCB Ship-to Region



■ Europe ■ Americas ■ China
■ Asia others ■ Others

FPC Ship-to Region



■ Americas ■ China
■ Asia others ■ Others

Five Production Sites (SZ, LC, JX, ZHFS&GLG)



Plant Area



50,000 m²

F1

SZ Kinwong

- Headquarter
- PCB Division & FPC Division
- Monthly capacity: PCB**63,000**m², FPC**25,000**m²
- Employee: **2,300+**



230,000 m²

F2

LC Kinwong

- Subsidiary in Heyuan, South China's Guangdong Province.
- Three product lines: PCB, FPC, MPCB
- Monthly capacity: PCB**100,000**m², FPC **140,000**m², MPCB**40,000**m²
- Employee: **6,100+**



240,000 m²

F3

JX Kinwong-Intelligent factory

- Subsidiary in Ji'an, east China's Jiangxi Province
- JX PCB Division, world-leading intelligent PCB factory
- Monthly capacity: PCB **390,000**m²
- Employee: **3,000+**



85,000 m²

F4-1

ZH Kinwong

Fu Shan

- Subsidiary in Zhuhai, Guangdong Province
- Fushan FPC Division
- Monthly capacity: **45,000**m² FPC
- Employee: **1,300+**



150,000 m²

F4-2

Gaolangang-High Tech. factory

- Subsidiary in Zhuhai, Guangdong Province
- High Layer Count & SLP factory
- Monthly capacity: **100,000**m² PCB (High Layer Count), **50,000**m² SLP
- Employee: **1600+**

PCB: Printed Circuit Board; FPC: Flexible Printed Circuit (Board) ; MPCB: Metal Printed Circuit Board
HLC: High Layer Count; SLP: Substrate like PCB

Five Production Sites Product Types

KINWONG

Location	Products	Monthly Capacity	PCB	FPC	M-PCB	R-Flex	HDI	HLC	HF	Copper Inlay	Module/Substrate/SIP	FPCA	Factory Specialty
SZ	PCB	63,000m ²	✓			✓	✓	✓	✓				Low Volume, various product technology, special base material, unique processing; Rigid-flex, High Frequency, high layer count heavy copper and HDI covers application field of automotive, telecommunication, industry control, power supply and medical products etc.
	FPC	FPC: 25,000m ² FPCA: 10KK		✓		✓						✓	Use for Display Module, Touch Screen, Automobile, Industrial Control, UAV, Electronic Cigarette, Smart Home, Medical Industry.
LC	PCB	100,000m ²	✓					✓	✓				Middle & Large Volume; Multi-layer board, applied in telecommunication, power supply, automotive and industrial.
	FPC	FPC: 140,000m ² FPCA: 60KK		✓		✓						✓	Middle & Large Volume; Use for Automobile, Display Module, Touch Screen, Smartphone, LED backlight, Electronic Cigarette, TWS.
	MPCB	40,000m ²			✓					✓			Middle& Large Volume, Dedicated to thermal management solutions applied in new energy automotive, automotive lighting, power module and other lighting.
JX	PCB	390,000m ²	✓						✓				Large volume normal FR-4 boards; Widely applied in automotive, consumer and telecommunication and etc.,.
ZH 2	Fu Shan FPC	FPC: 45,000m ² FPCA: 40KK		✓		✓						✓	Large volume; Use for Medical Industry, Wireless Charging, Touch Screen, Automobile, TWS, Smart Home, Display Module, 5G etc.
	Gao Langang HLC	100,000m ²					✓	✓	✓				Large Volume; Dedicated on high layer count, widely applied in telecommunication, network, server, storage and automobiles.
	Gao Langang SLP	50,000m ²					✓				✓		Large Volume; Dedicated to SLP, applied in telecommunication, consumer products.

Why Kinwong?



**Kinwong
Core Values**

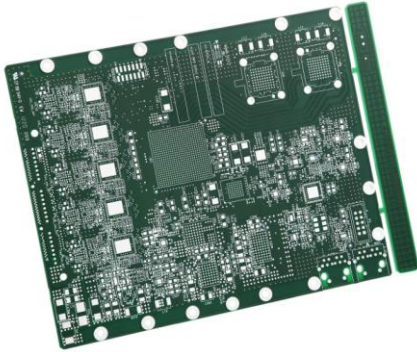
**Strong financial
management**

**Real time technical
and quality support**

**Received many
outstanding awards
from major customers**

**11 Facilities in 5
Manufacturing sites**

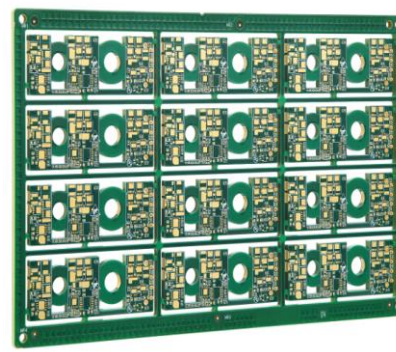
PCB Product Examples



**18L Board
-Industrial Control**



**HLC+High Speed+HDI
-Telecom**



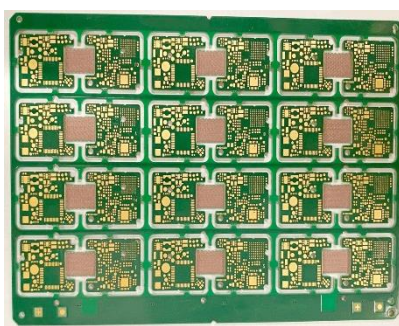
**HLC+Heavy
Copper**



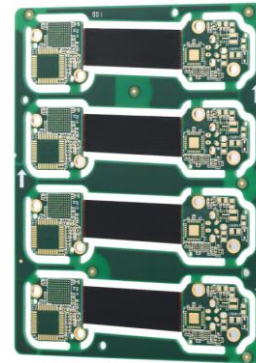
Multilayer



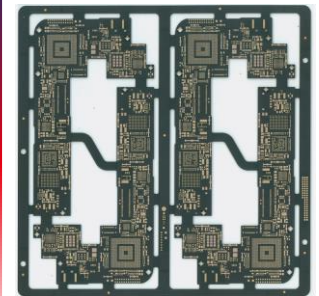
**High Frequency
-ADAS**



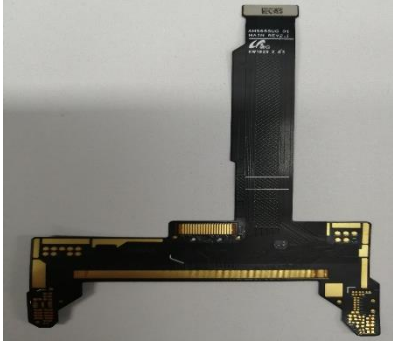
**8L Semi-flex Board
-Industrial**



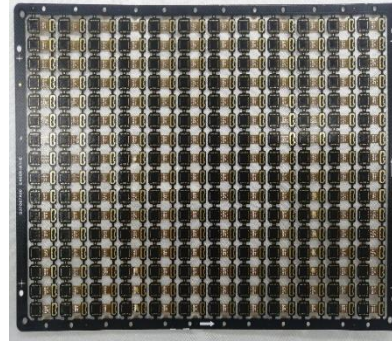
**Rigid-flex
Board**



**Any Layer Board
-Consumer**



OLED FPC



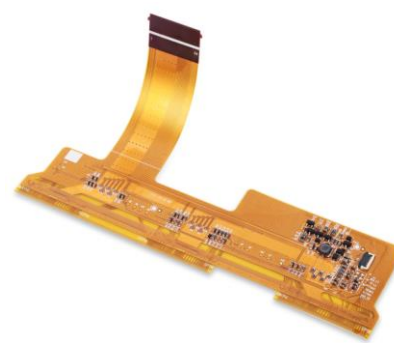
Camera Compact Module FPC



5G Transmission Line FPC



EV Battery

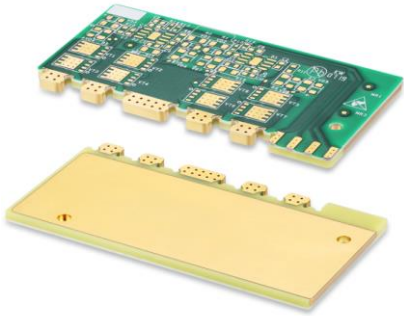


Automotive TFT

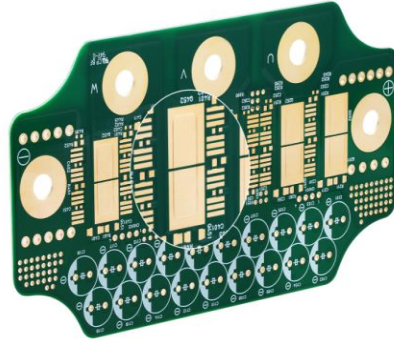


Tablet TFT

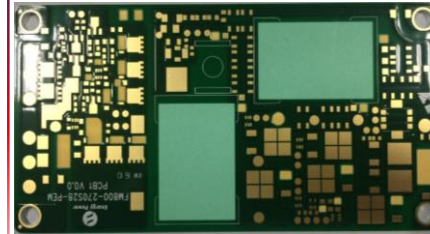
MPCB Product Examples



**Cu Inlay, Side Metallization
Large Power -Telecom**



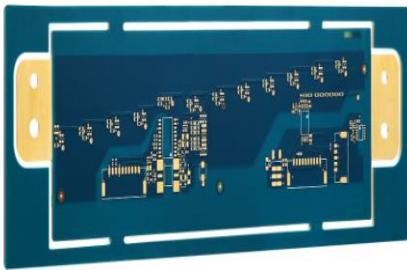
**Cu Inlay
-Automotive
Lighting**



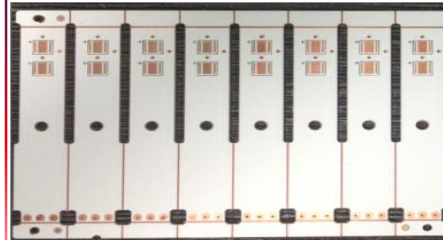
**2L Al-Base ,Laser
Blind Via
Power**



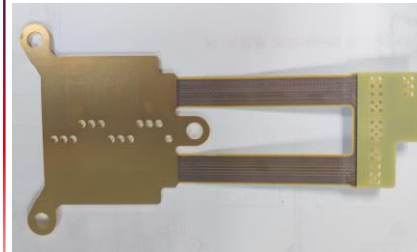
**Double Side Al-Core
-Lighting Bar**



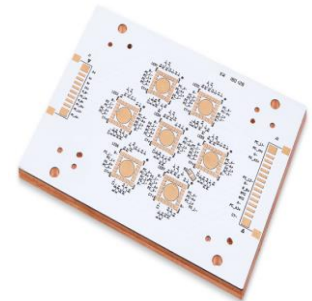
**Double Side Cu Core
with Thermal
Conductive Resin**



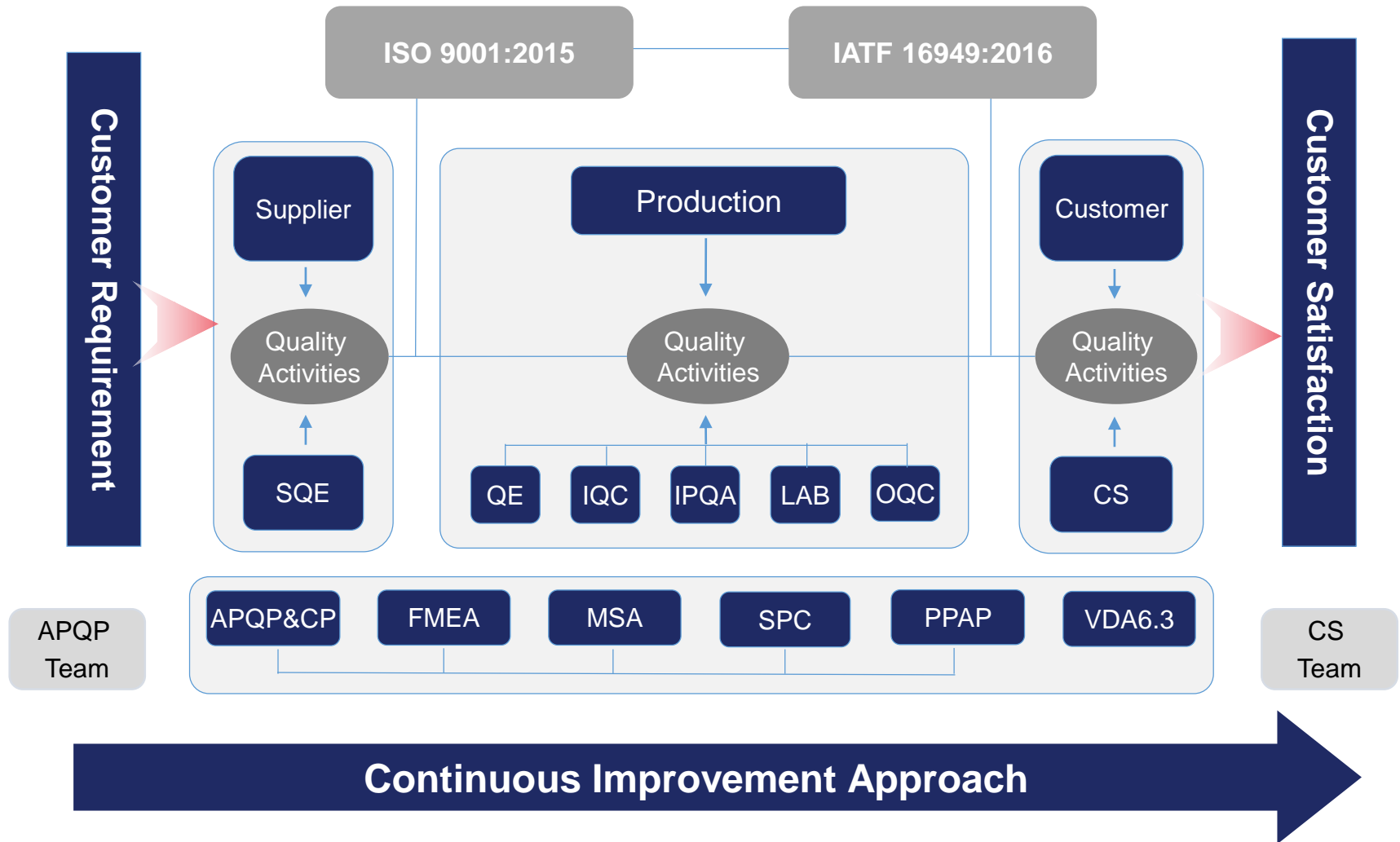
**Double Side Cu
Pedestal**



**Flex on Al-Base
-Lighting**



**Single Side Cu
Pedestal
-Lighting**



Kinwong System Management

QMS

General
ISO9001



ISO 9001
Quality
Management
Systems
CERTIFIED

Automotive
IATF16949



IATF 16949
Automotive Quality
Management
CERTIFIED

Medical
ISO13485



CSR

Environment
ISO14001



OHS system
ISO45001



Energy system
ISO50001



HSPM
IECQ QC080000



ISMS

ISMS
ISO27001



ISO/IEC
27001
Information Security
Management
CERTIFIED

Other systems

CNAS
IEC/ISO17025



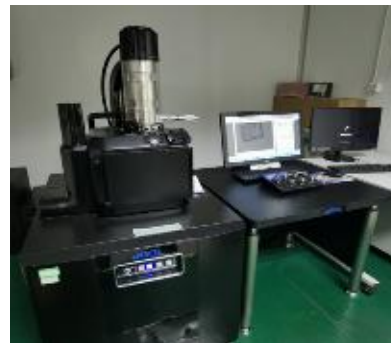
Plant	ISO9001: 2015 Quality	IATF16949: 2016 /TS16949 Automotive	ISO13485: 2016 Medical	ISO27001: 2013 ISMS	IECQ QC080000: 2017 HSPM	ISO14001: 2015 EMS	ISO45001: 2018	GB/T23331- 2012 Energy	GB/T23001- 2017 I&I	ISO/IEC17025: 2017 CNAS
Shenzhen	✓	✓	✓	✓	✓	✓	✓	✓	✓	✓
Original Registration Date	2006-5-18	2006-4-20	2015-11-2	2019-12-25	2016-1-5	2008-12-24	2009-10-16	2018-12-20	2019-1-8	2017-1-3
Longchuan	✓	✓	✓	✓	✓	✓	✓			
Original Registration Date	2008-7-6	2008-7-6	2019-5-22	2019-12-25	2014-3-11	2008-7-14	2013-4-22			
Jiangxi	✓	✓	✓	✓	✓	✓	✓			
Original Registration Date	2014-9-8	2015-6-8	2018-11-1	2019-12-25	2015-7-14	2014-8-29	2016-1-4			
Zhuhai FS	✓	✓			✓	✓				
Original Registration Date	2017-9-14	2017-9-14			2016-5-27	2019-6-29				
Zhuhai GLG	✓	✓			✓	✓	✓			
Original Registration Date	2021-6-23	2022-04 EST			2021-7-08	2021-7-28	2021-7-28			



CAF Test System



On-line Thermal Shock



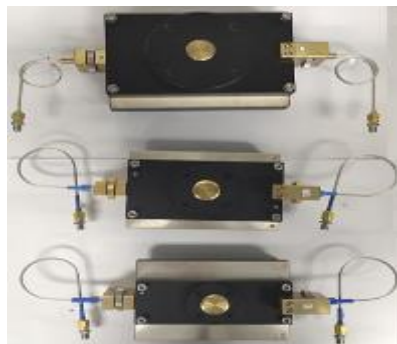
SEM+EDS



**Laser Scanning
Confocal Microscope**



Vector Netlist Analysis + Dk & Df Test System



DMA



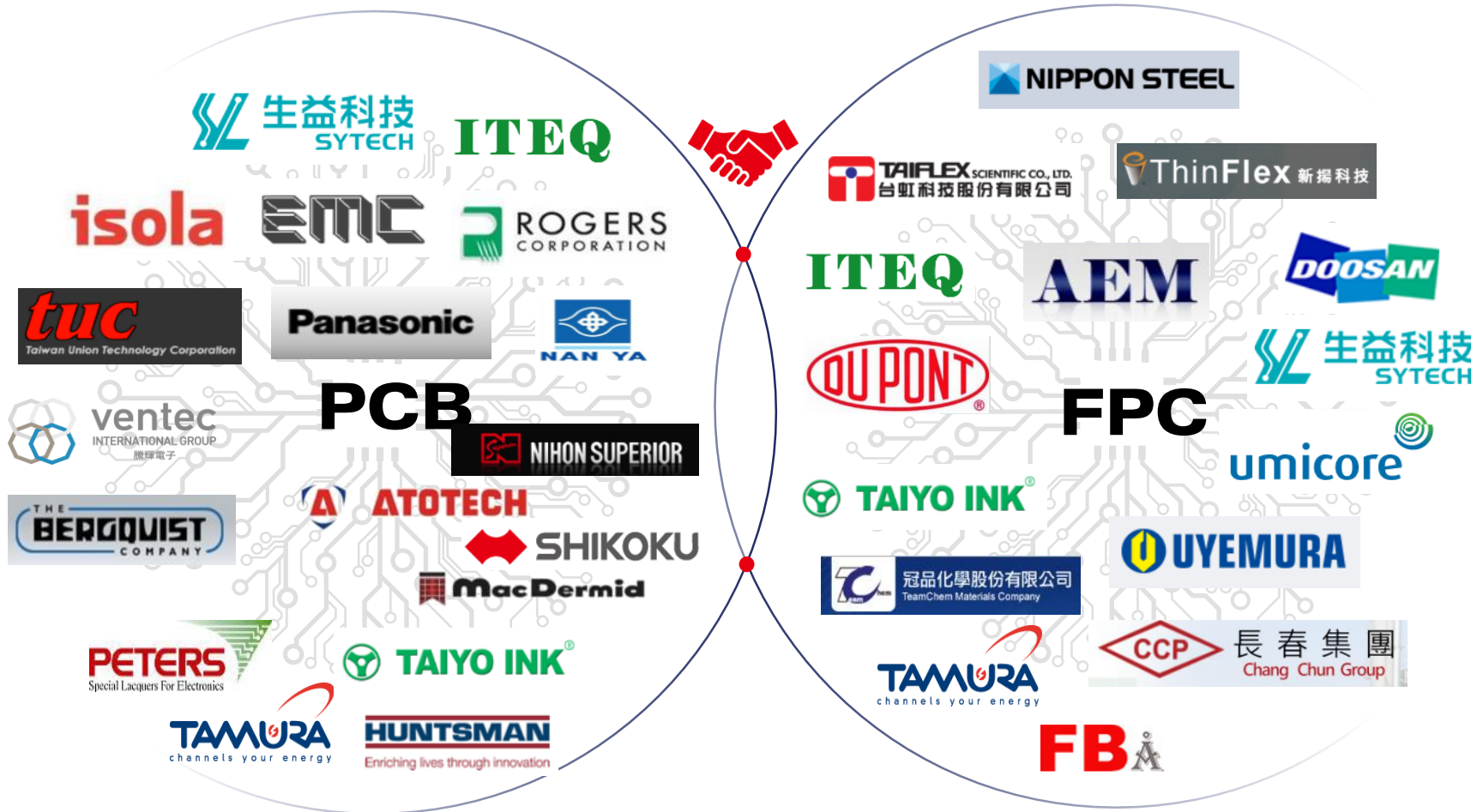
TMA



- 2020 ● ZTE Best Comprehensive Performance Award
- 2020 ● Huawei HiSilicon FPC Best Supplier Quality Assurance Award
- 2020 ● oppo Quality First Award
- 2020 ● TRULYOPTO Excellent Supplier
- 2020 ● vivo Excellent Quality Award
- 2018-2020 ● Sungrow Excellent Quality
- 2018-2020 ● HiRain Best Supplier
- 2018-2020 ● CSOT Excellent Quality Award
- 2020 ● Visionox Best Quality Award
- 2020 ● Askey Excellent Supplier
- 2020 ● Wingtech Excellent Quality Award
- 2019 ● Plexus Excellent Partner
- 2019 ● Liteon Outstanding Supplier
- 2020-2019 ● Logitech Sustainability "Torch" Award
- 2019~2015 ● Hella Best Supplier

.....

.....





- Environmental rule & law compliance,
Reduce cost & waste
- Keep cleanness & safety production
- Continuous improvement on
environmental protection



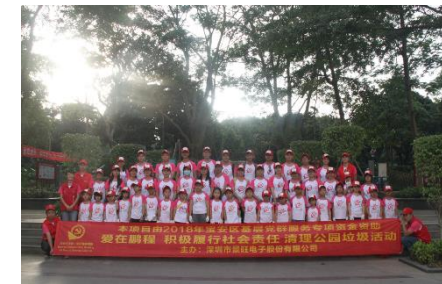
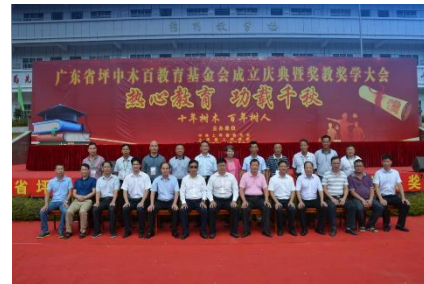
- Contribute to the environmental protection and the sustainable development of human society.



Kinwong Business Philosophy

- People foremost
- Manufacturing competitive products
- Expanding the enterprise
- Repaying the society.

Kinwong participates in social charities on a routine basis, which ranges from financial donations for education, civil donations that help them build bridges and repair roads, and helping the elderly and children via young people volunteering their time and care.





THANKS

**To become the most reliable printed circuit
board manufacturer in the world.**